



Transport Access Program

Glenbrook Station Upgrade

Community Notification

February 2019

Project update

The Transport Access Program is a NSW Government initiative to provide a better experience for public transport customers by delivering accessible, secure and integrated transport infrastructure.

This month, work on the Glenbrook Station will start with site establishment beginning in late January. Upcoming work in February will include:

- on-going site establishment
- relocation of electrical services
- vegetation removal
- excavation for the lift pit
- piling and concrete work for the new walkway on Burfitt Parade
- installation of fencing and hoarding along Burfitt Parade

A piling rig will be temporarily located on the westbound lane of Burfitt Parade beside the pedestrian crossing, for a period of **four days** between **Monday 18 February to Thursday 28 February 2019**. During this time, pedestrian access to the station will be diverted and Burfitt Parade westbound lane will be closed. Traffic management and signs will be in place to assist motorists and pedestrians with the changed conditions.



Location of work area on Burfitt Parade

Upcoming weekend and night work

In February, weekend and night work will be undertaken in addition to standard hours to ensure the safety of workers, pedestrians and motorists. From **2am Saturday 16 February to 2am Monday 18 February** construction equipment will be transported onto the station platform and excavation activities, vegetation removal, service relocation and installation of fencing and hoarding will be carried out.

Equipment to be used includes excavators, chain saw, wood chipper, concrete saw, construction vehicles and hand tools.

FEBRUARY							Day and Night work
							Day work only
M	T	W	T	F	S	S	
				1	2	3	
4	5	6	7	8	9	10	
11	12	13	14	15	16	17	
18	19	20	21	22	23	24	
25	26	27	28				

Minimising impact to existing vegetation has been a fundamental consideration during design development. Some vegetation removal will be required to facilitate construction of the new accessible path from Burfitt Parade to the station, and additional details can be found in the project Determination Report at transport.nsw.gov.au/glenbrook. A qualified ecologist will undertake an assessment and recommend mitigation measures for implementation prior to any vegetation removal.

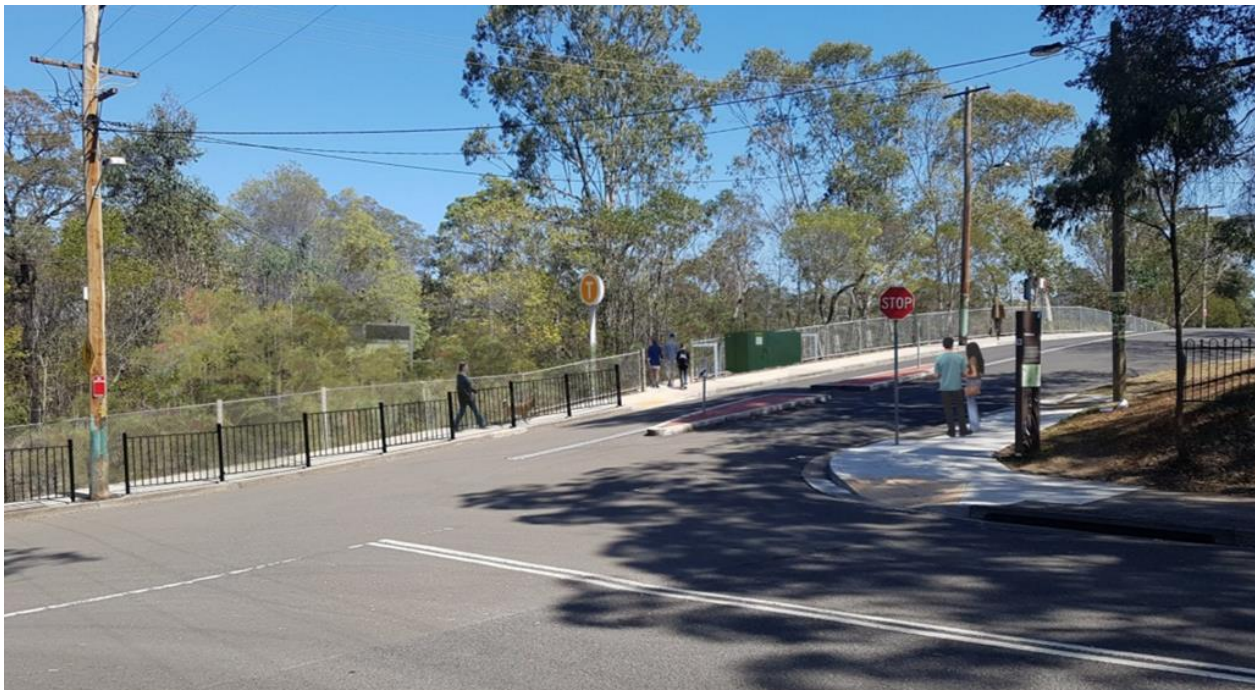
Some of the work may be noisy and we try to reduce the impacts where we can. Noise mitigation measures include:

- only using noisy machinery when there are no other alternatives
- scheduling noisier work during daylight and early evening hours
- turning off machinery when not in use.

These works will be undertaken during a scheduled Sydney Trains shutdown period when no trains will be running and pedestrian access to the station will be closed during this time. Please visit transportnsw.info or call **131 500** for up to date information regarding train services at this time.

Standard working hours

Standard work hours are between **7am to 6pm, Monday to Friday** and **8am to 1pm Saturdays**.



Artist's impression – subject to detailed design

Delivered by Downer EDI Works



This document contains important information about public transport projects in your area. If you require the services of an interpreter, please contact the Translating and Interpreting Service on **131 450** and ask them to call Transport for NSW on **(02) 9200 0200**. The interpreter will then assist you with translation.

French

Ce document contient des informations importantes sur les projets de transport public dans votre région. Si vous avez besoin de Services d'un interprète, veuillez contacter le service de traduction et d'interprétation au 131 450 et leur demander de Appeler Transports pour NSW le (02) 9200 0200. L'interprète vous aidera alors à traduire.

Greek

Το παρόν έγγραφο περιέχει σημαντικές πληροφορίες σχετικά με δημόσια έργα μεταφορών στην περιοχή σας. Αν χρειάζεστε τις υπηρεσίες διερμηνέα, παρακαλούμε επικοινωνήστε με την Υπηρεσία Μεταφράσεων και Διερμηνείας στο 131 450 και ζητήστε τους τηλεφωνήσουν στις Συγκοινωνίες στη ΝΝΟ στο (02) 9200 0200. Ο διερμηνέας θα σας βοηθήσει στη συνέχεια με τη μετάφραση.

German

Dieses Dokument enthält wichtige Informationen über die Planung der öffentlichen Verkehrsmittel in ihrer Umgebung. Falls Sie einen Dolmetscher benötigen, wenden Sie sich bitte an die Dienststelle für Übersetzer und Dolmetscher unter der Nummer 131 450 und bitten diese Transport for NSW unter der Nummer (02) 9200 0200 anzurufen. Ein Dolmetscher wird ihnen dann mit dem Übersetzen des Texts helfen.

Italian

Il presente documento contiene importanti informazioni sulle iniziative nel campo del trasporto pubblico nella vostra zona. Se desiderate i servizi di un interprete, contattate il Servizio traduzioni e interpreti al numero 131 450 indicando di voler parlare con Transport for NSW al numero (02) 9200 0200. L'interprete vi aiuterà a condurre la conversazione telefonica.