



Transport Access Program

Hazelbrook Station Upgrade

WEEKEND AND NIGHT WORK

September 2019

Upcoming weekend and night work

From 2am Saturday 7 September to 2am Monday 9 September

To ensure the safety of our customers and staff, this work will be completed during a scheduled Sydney Trains trackwork weekend. No train services will be operating this weekend. Please contact Transport Info on **131 500** or visit transportnsw.info for more information about replacement bus services

What work will take place?

Hazelbrook Station Upgrade

Work will continue on the platform and the pedestrian concourse at the station. This work will include installation of glass panels, canopies, opal machine, hearing loops, light poles, and drainage, and delivery of lift equipment and materials.

What equipment will be used?

Equipment used during this work will include excavators, dump trucks, cranes, flatbed rail trucks, lighting towers and compaction rollers, hand tools, power tools, elevated work platforms, generators and concrete saws.

New Intercity Fleet Project

The New Intercity Fleet project team will also be working during the weekend 7 – 9 September to modify the station awning and relocate services. The NSW Government is delivering a New Intercity Fleet to replace trains carrying customers between Sydney and the Central Coast, Newcastle, the Blue Mountains and the South Coast.

What equipment will be used?

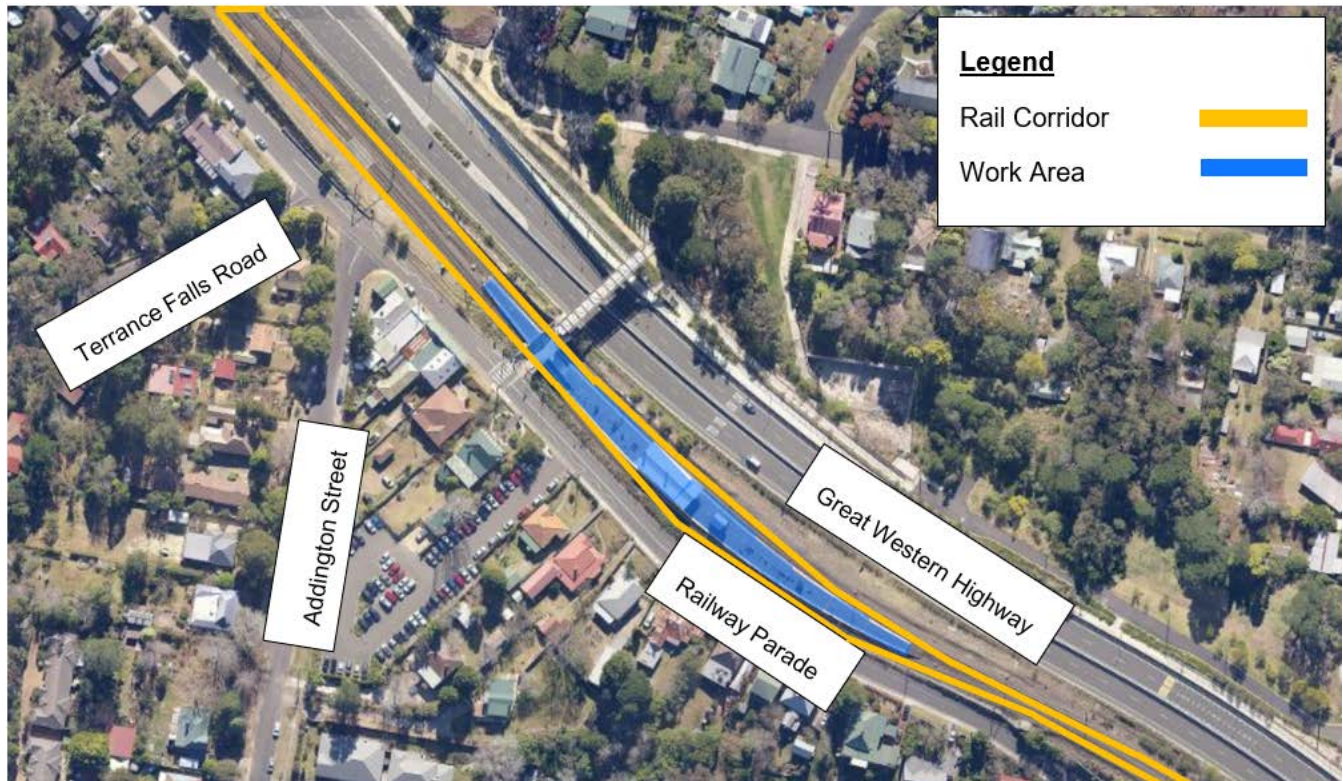
Equipment used during this work will include elevated work platforms, lighting tower, generators, excavator and hand tools including drills.

The pedestrian footbridge access will remain open and we ask that pedestrians follow direction from traffic controllers to ensure safety is maintained.

Every effort will be made to minimise construction impacts to the local community. The work may be noisy at times, however we will take every possible step to reduce noise like turning equipment off when not in use.

We understand upgrades to the station can bring some inconvenience during construction and thank you for your patience during this time.

Map of work area



Delivered by Downer EDI Works



This document contains important information about public transport projects in your area. If you require the services of an interpreter, please contact the Translating and Interpreting Service on **131 450** and ask them to call Transport for NSW on **(02) 9200 0200**. The interpreter will then assist you with translation.

German

Dieses Dokument enthält wichtige Informationen über die Planung der öffentlichen Verkehrsmittel in ihrer Umgebung. Falls Sie einen Dolmetscher benötigen, wenden Sie sich bitte an die Dienststelle für Übersetzer und Dolmetscher unter der Nummer 131 450 und bitten diese Transport for NSW unter der Nummer (02) 9200 0200 anzurufen. Ein Dolmetscher wird ihnen dann mit dem Übersetzen des Texts helfen.

Spanish

El presente documento contiene información importante sobre proyectos de transporte público en su área. Si requiere los servicios de un intérprete, llame al Translating and Interpreting Service al 131 450 y pídale que llamen a **Transport for NSW**, teléfono: (02) 9200 0200. Luego el intérprete le ayudará con la traducción.