

# Transport Access Program

## Hazelbrook Station Upgrade

Have your say



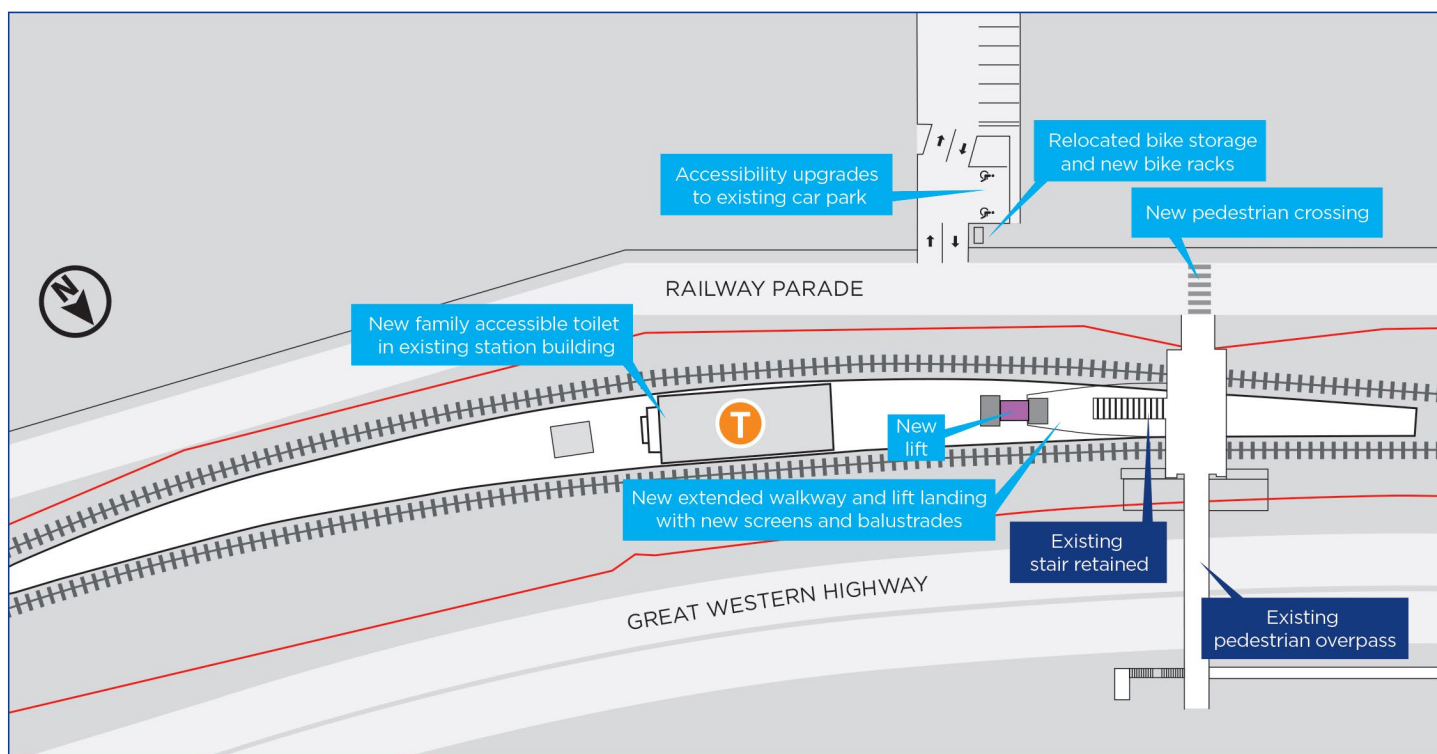
### The NSW Government is improving accessibility at Hazelbrook Station

Have your say on the proposed improvements to Hazelbrook Station. Key features include:

- a new lift to provide access to the station platform
- upgrades to provide accessible pedestrian pathways between station facilities
- two upgraded accessible parking spaces in the commuter car park
- improved amenities such as a family accessible toilet and upgrades to CCTV and wayfinding.

For more information call 1800 684 490

Email [projects@transport.nsw.gov.au](mailto:projects@transport.nsw.gov.au) or visit [transport.nsw.gov.au/projects](http://transport.nsw.gov.au/projects)



*Proposed Hazelbrook Station Upgrade, subject to change during detailed design.*

## Have your say

The Review of Environmental Factors is on public display until **Thursday 6 December 2018**, and community feedback is invited during this time. To view the REF, please scan the QR code or visit:

- [www.transport.nsw.gov.au/hazelbrook](http://www.transport.nsw.gov.au/hazelbrook)
- [www.yoursay.transport.nsw.gov.au/hazelbrook](http://www.yoursay.transport.nsw.gov.au/hazelbrook)
- **Transport for NSW Office**  
Level 5, Tower A, Zenith Centre,  
821 Pacific Highway, Chatswood
- **Lawson Library**  
Loftus St, Lawson
- **Blue Mountains City Council**  
Upper Mountains Office  
2-6 Civic Place, Katoomba
- **Blue Mountains City Council**  
Lower Mountains Office  
104 Macquarie Road, Springwood

Feedback may be sent to:

- [projects@transport.nsw.gov.au](mailto:projects@transport.nsw.gov.au)
- **Transport Access Program – Hazelbrook**  
Associate Director Environmental Impact Assessment  
Transport for NSW  
Locked Bag 6501, St Leonards NSW 2065

Please provide your feedback  
by **5pm Thursday 6 December 2018**.

**Your feedback will help Transport  
for NSW understand what is  
important to customers and  
the community.**



## Transport Access Program

This project is being delivered as part of the Transport Access Program, a NSW Government initiative to provide a better experience for public transport customers by delivering accessible, modern, secure and integrated transport infrastructure. As part of this program, the Hazelbrook Station upgrade would aim to provide a station precinct that is accessible to those with a disability, limited mobility, parents/carers with prams and customers with luggage.

## Next steps

Subject to planning approval, construction is expected to commence in 2019 and be completed in 2021.

Transport for NSW develops initial concept design options for the project including identification and consideration of environmental constraints, risks and opportunities.

We are  
here

Transport for NSW prepares a Review of Environmental Factors (REF) for public display and invites submissions.

Transport for NSW assesses and responds to feedback and prepares a submission report/determination report with proposed conditions to minimise environmental impacts.

Transport for NSW determines the Proposal.  
*Conditions of Approval made available on Transport for NSW website.*

Construction commences subject to compliance with conditions.

### Come and meet the Transport for NSW project team

The Transport for NSW project team will be located at Hazelbrook Station on the following dates to answer any questions you may have on the project:

- **Monday 3 December 2018 4pm-6pm**
- **Tuesday 4 December 2018 4pm-6pm**

Feel free to drop in at any time during these hours.

If you have any questions, please call the Project Infoline on **1800 684 490** or email [projects@transport.nsw.gov.au](mailto:projects@transport.nsw.gov.au).

### Review of Environmental Factors

The Review of Environmental Factors (REF) is a planning document outlining the proposed works, potential impacts and mitigation measures.

The document includes comprehensive assessments on the existing environment and expected impacts of the project on the following areas: Traffic and Transport, Biodiversity, Visual Impact, Noise and Vibration and Heritage.





*Artist's impression of the proposed Hazelbrook Station Upgrade, subject to detailed design.*



This document contains important information about public transport projects in your area. If you require the services of an interpreter, please contact the Translating and Interpreting Service on **131 450** and ask them to call Transport for NSW on **(02) 9200 0200**. The interpreter will then assist you with translation.

#### German

Dieses Dokument enthält wichtige Informationen über die Planung der öffentlichen Verkehrsmittel in ihrer Umgebung. Falls Sie einen Dolmetscher benötigen, wenden Sie sich bitte an die Dienststelle für Übersetzer und Dolmetscher unter der Nummer 131 450 und bitten diese Transport for NSW unter der Nummer (02) 9200 0200 anzurufen. Ein Dolmetscher wird ihnen dann mit dem Übersetzen des Texts helfen.

#### Italian

Il presente documento contiene importanti informazioni sulle iniziative nel campo del trasporto pubblico nella vostra zona. Se desiderate i servizi di un interprete, contattate il Servizio traduzioni e interpreti al numero 131 450 indicando di voler parlare con Transport for NSW al numero (02) 9200 0200. L'interprete vi aiuterà a condurre la conversazione telefonica.

#### Spanish

El presente documento contiene información importante sobre proyectos de transporte público en su área. Si requiere los servicios de un intérprete, llame al Translating and Interpreting Service al 131 450 y pídale que llamen a **Transport for NSW**, teléfono: (02) 9200 0200. Luego el intérprete le ayudará con la traducción.

#### Chinese

這份文件包含你所在地區公共交通工程項目的重要信息。如果你需要傳譯服務，請致電翻譯與傳譯服務機構，電話 131 450，要求他們為你接通交通工程部(Transport for NSW)，電話是 (02) 9200 0200。傳譯員會為你做翻譯。