

Transport Access Program

Hawkesbury River Station Upgrade



Artist's impression of Hawkesbury River Station Upgrade, subject to detailed design.

The NSW Government is improving accessibility at Hawkesbury River Station

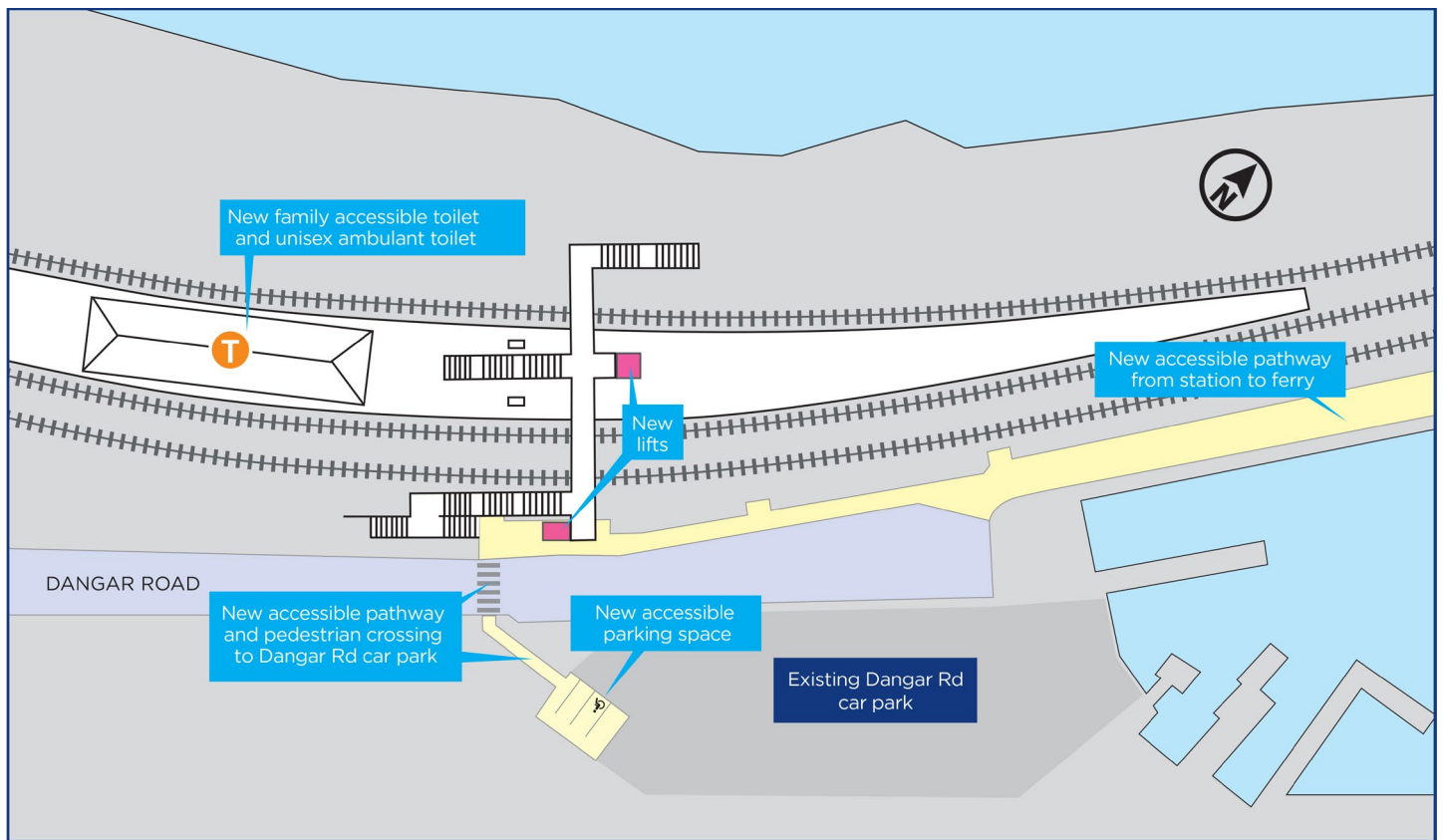
Key features include:

- 2 new lifts to provide access to the station platform
- a new accessible pathway from the station to the public ferry wharf
- a new accessible parking space in the Dangar Road car park
- a new accessible pathway and pedestrian crossing to the Dangar Road car park
- a new family accessible toilet and unisex ambulant toilet
- improvements to CCTV and lighting to increase safety and security.

Come and meet the Transport for NSW project team

Between **4pm and 6pm** on **Tuesday 11 December**, representatives from the Transport for NSW project team will be located at **Hawkesbury River Station**. Drop in any time to meet with the project team and learn more about the plans to upgrade the station. If you have any further questions, please call the Project Infoline on **1800 684 490** or email projects@transport.nsw.gov.au.

For more information call 1800 684 490
Email projects@transport.nsw.gov.au or visit transport.nsw.gov.au/projects



Proposed Hawkesbury Road Station Upgrade, subject to change during detailed design.

Transport Access Program

This project is being delivered as part of the Transport Access Program, a NSW Government initiative to provide a better experience for public transport customers by delivering accessible, modern, secure and integrated transport infrastructure across the state. As part of the program, the Hawkesbury River Station upgrade would aim to provide a station precinct that is accessible to those with a disability, limited mobility, carers/parents with prams and customers with luggage.



This document contains important information about public transport projects in your area. If you require the services of an interpreter, please contact the Translating and Interpreting Service on **131 450** and ask them to call Transport for NSW on **(02) 9200 0200**. The interpreter will then assist you with translation.

Chinese

這份文件包含你所在地區公共交通工程項目的重要信息。如果你需要傳譯服務，請致電翻譯與傳譯服務機構，電話 131 450，要求他們為你接通交通工程部(Transport for NSW)，電話是 (02) 9200 0200。傳譯員會為你做翻譯。

Korean

이 문서는 귀하의 해당 지역에 있는 대중교통 프로젝트에 관한 중요한 정보를 담고 있습니다. 통역사 서비스가 필요하시면 통번역서비스에 131 450 으로 연락하셔서 이들에게 NSW 대중교통 (Transport for NSW)에 (02) 9200 0200 으로 연락하도록 요청하십시오. 그러면 통역사가 번역과 함께 귀하를 도와드릴 것입니다.

For more information call 1800 684 490
Email projects@transport.nsw.gov.au or visit transport.nsw.gov.au/projects

