



Artist's Impression of station access off Burfitt Parade



This document contains important information about public transport projects in your area. If you require the services of an interpreter, please contact the Translating and Interpreting Service on **131 450** and ask them to call Transport for NSW on **(02) 9200 0200**. The interpreter will then assist you with translation.

Greek

Το παρόν έγγραφο περιέχει σημαντικές πληροφορίες σχετικά με δημόσια έργα μεταφορών στην περιοχή σας. Αν χρειάζεστε τις υπηρεσίες διερμηνέα, παρακαλούμε επικοινωνήστε με την Υπηρεσία Μεταφράσεων και Διερμηνείας στο 131 450 και ζητήστε τους τηλεφωνήσουν στις Συγκοινωνίες στη ΝΝΟ στο (02) 9200 0200. Ο διερμηνέας θα σας βοηθήσει στη συνέχεια με τη μετάφραση.

German

Dieses Dokument enthält wichtige Informationen über die Planung der öffentlichen Verkehrsmittel in ihrer Umgebung. Falls Sie einen Dolmetscher benötigen, wenden Sie sich bitte an die Dienststelle für Übersetzer und Dolmetscher unter der Nummer 131 450 und bitten diese Transport for NSW unter der Nummer (02) 9200 0200 anzurufen. Ein Dolmetscher wird ihnen dann mit dem Übersetzen des Texts helfen.

For more information call 1800 684 490
Email projects@transport.nsw.gov.au or visit transport.nsw.gov.au/projects



November 2018

Transport Access Program Glenbrook Station Upgrade Have your say



Artist's impression of the proposed Glenbrook Station upgrade, subject to change during detailed design activities

The NSW Government is Improving accessibility at Glenbrook Station

Have your say on the proposed improvements to Glenbrook Station. Key Features include:

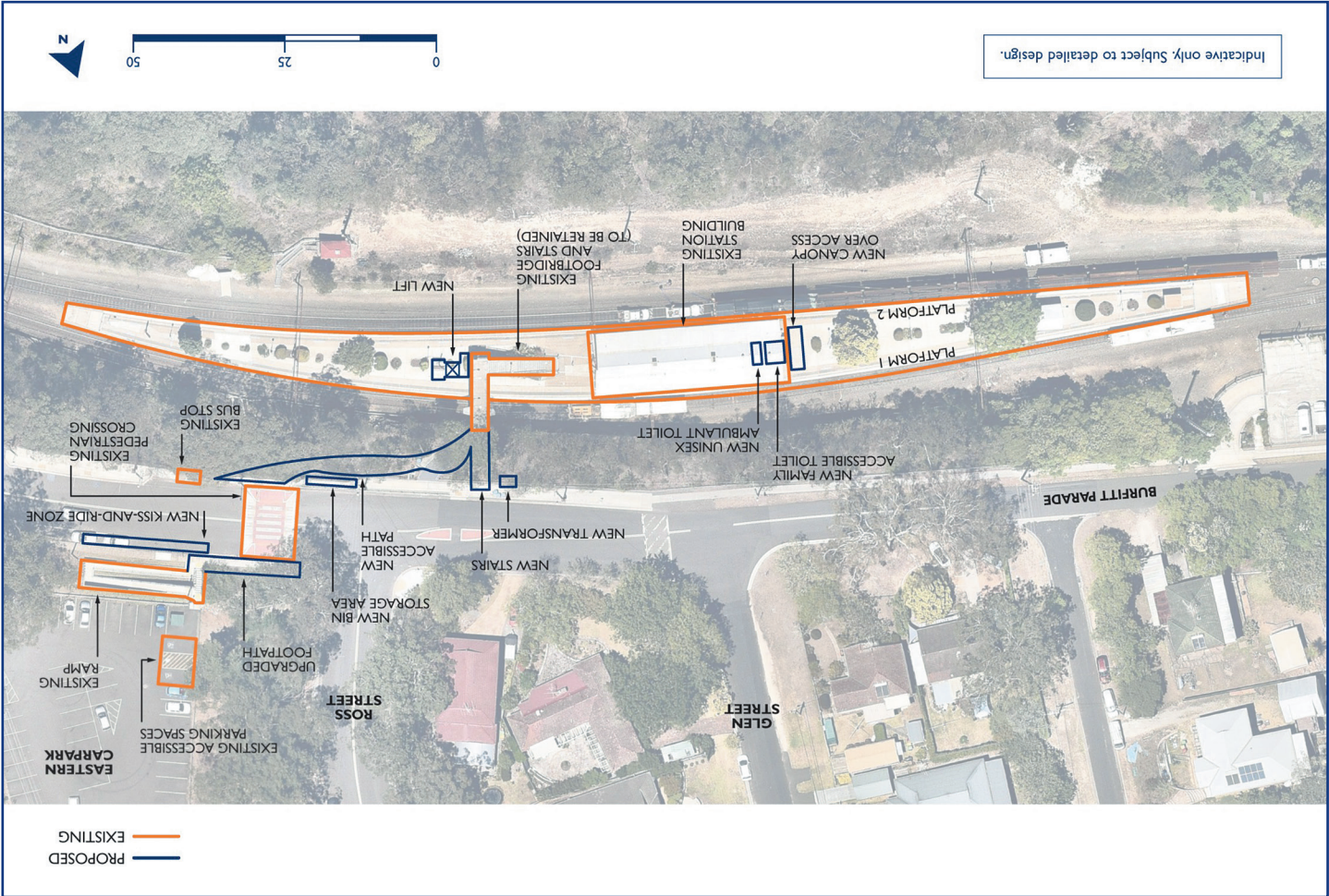
- a new lift to provide access to the existing footbridge
- a new, accessible kiss-and-ride area on Burfitt Parade
- upgrades to CCTV, wayfinding and lighting to improve safety and security
- new ambulant and family bathrooms
- new station entrance and accessible pathways connecting the Eastern car park on Burfitt Parade to the station
- upgrades to existing platform surfaces and footpaths around the station precinct to improve accessibility.

Transport Access Program

This project is being delivered as part of the Transport Access Program, a NSW Government initiative to provide a better experience for public transport customers by delivering accessible, modern, secure and integrated transport infrastructure. As part of this program, the Glenbrook Station upgrade would aim to provide a station precinct that is accessible to those with a disability, limited mobility, parents/carers with prams and customers with luggage.

For more information call 1800 684 490
Email projects@transport.nsw.gov.au or visit transport.nsw.gov.au/projects

Key elements of the Proposal



Have your say

The Review of Environmental Factors is on public display for community feedback. To view this, please scan the QR code or visit:

- transport.nsw.gov.au/glenbrook-station-upgrade
- yoursay.transport.nsw.gov.au/glenbrook
- Transport for NSW Office
Level 5, Tower A, Zenith Centre,
821 Pacific Highway, Chatswood
- Blaxland Library
33 Hope Street, Blaxland
- Blue Mountains City Council
(Lower Mountains Office),
104 Macquarie Road, Springwood

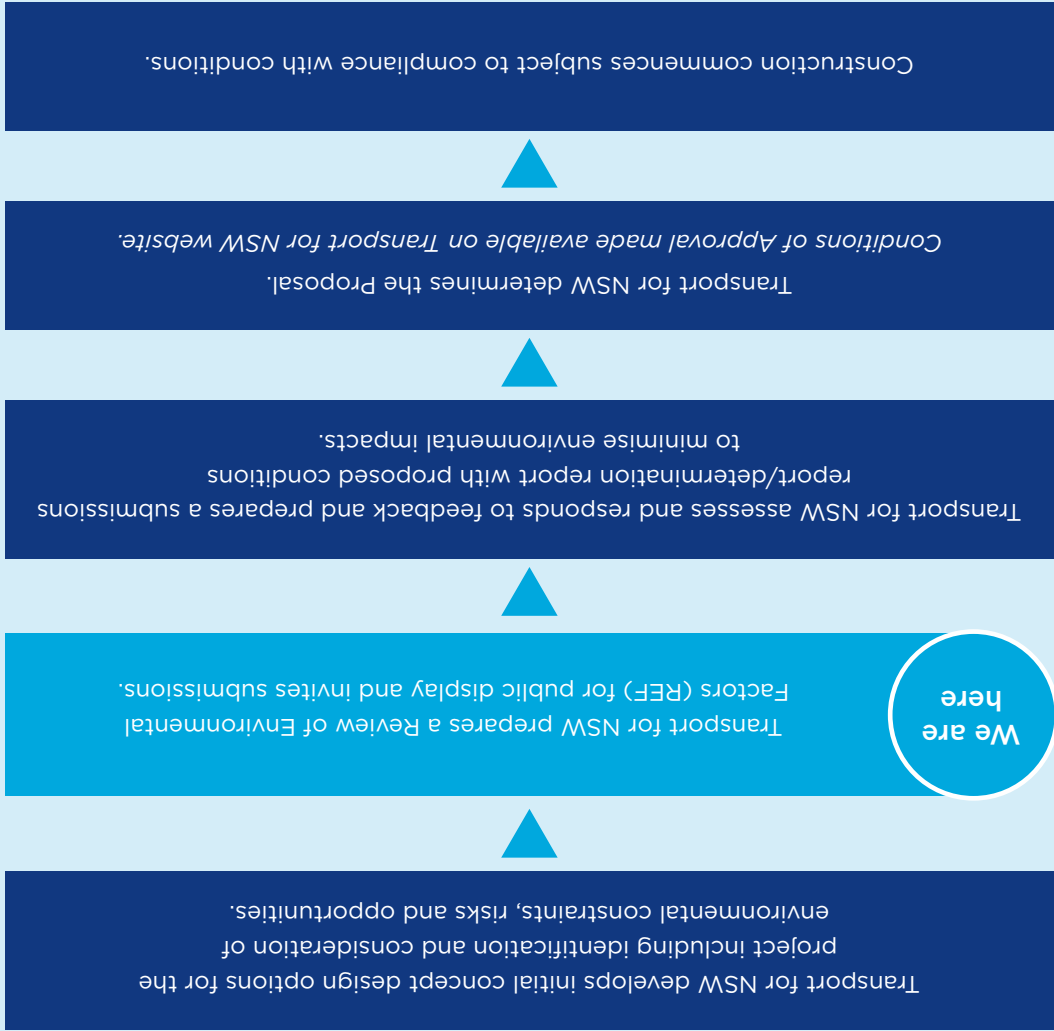
Feedback may be sent to:
• projects@transport.nsw.gov.au
• Transport Access Program – Glenbrook Associate Director, Environmental Impact Assessment
Transport for NSW
Locked Bag 6501
St Leonards NSW 2065
Please provide your feedback by 5pm Monday 26 November 2018.



Your feedback will help Transport for NSW understand what is important to customers and the community.

Next steps

Subject to planning approval, construction is expected to commence in early 2019 and take around 12 months to complete.



Come and meet the Transport for NSW project team

Between 4pm and 6pm on Thursday 15 November and Tuesday 20 November, representatives from the Transport for NSW project team will be located at Glenbrook Station to answer any questions you may have on the project. If you are unable to attend and would like to talk with the team please call the Project InfoLine on 1800 684 490 or email projects@transport.nsw.gov.au

Review of Environmental Factors
The Review of Environmental Factors (REF) is a planning document outlining proposed works, potential impacts and mitigation measures. The document includes comprehensive assessments on the existing environment and expected impacts of the project including: Traffic and Vibration, Biodiversity, Visual Impact, Noise and Vibration, and Heritage.