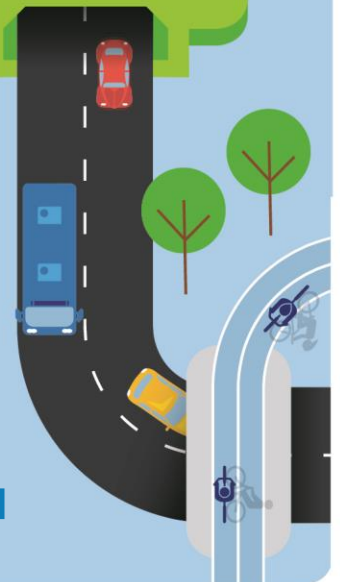


May 2020



# M6 Stage 1

**Power supply investigations on Bray Avenue, Hartill Avenue, Slade Road, Devon Road, Bardwell Road and Pile Street, Bardwell Park from Monday 25 May**



We will be carrying out survey investigations in your area so that we can determine a power supply route to help us build the M6 Stage 1 project.

We will continue to keep you updated with information about the route and our work to install the power supply.

## What does our work involve?

The investigations involve surveying the ground to find existing survey markers and installing new ones, if required.

We will use of light vehicles, survey tripods and hand held tools to complete this work.

We may need to lightly trim some vegetation to help us see our work area better.

## Our work schedule

Our work will take up to five weeks to complete, weather permitting.

Some of our work may need to take place at night when traffic volumes are lower. We will spend up to two nights of work at each location.

A map of our work is shown over the page.

Our work hours are:

**Day work: 7am to 6pm, Monday to Friday**

**8am to 1pm, Saturday**

**Night work: 9pm to 4am, Monday to Thursday**

No work will occur on Sundays or public holidays.

## How will our work affect you?

Our investigation work is not expected to be noisy.

For the safety of our workers and the community, we may need to temporarily remove some street parking and make some traffic changes during our work. Please follow our traffic signs and drive safely.

## About the M6 Stage 1 project

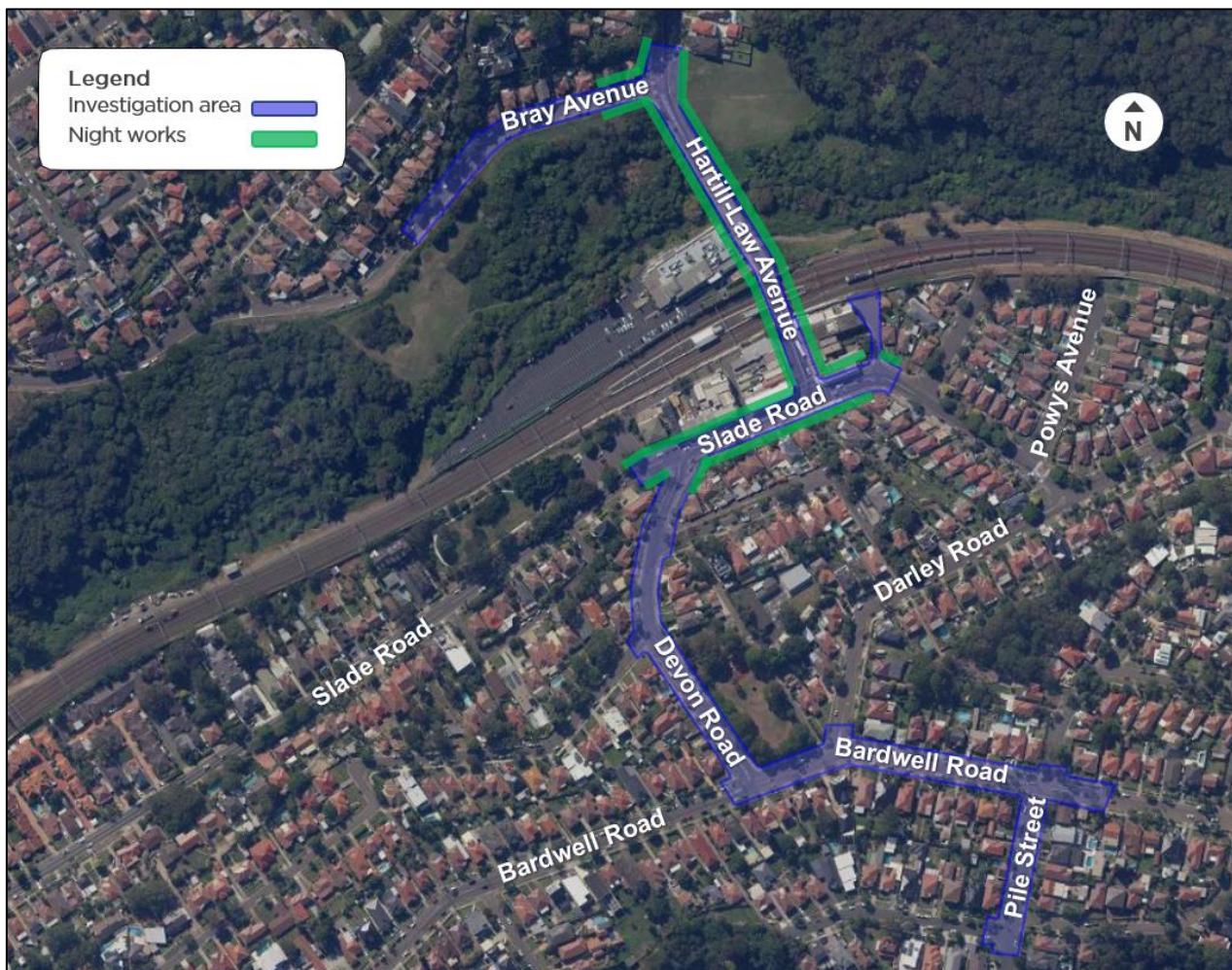
The M6 Stage 1 project will provide a new four kilometer underground motorway connection between the WestConnex New M5 at Arncliffe and President Avenue, Kogarah, connecting southern Sydney to the motorways network.

When the project is complete, the M6 Stage 1 will remove 2,000 trucks a day from surface roads and help ease congestion – returning local streets to communities.

Currently, infrastructure construction projects are considered essential to the economy and will continue as planned across the city and the state.






The safety and wellbeing of our workforce and the wider community is our highest priority. Our people are following hygiene and appropriate social distancing measures and will continue to do so.

## Location of investigation work on Bray Avenue, Hartill Avenue, Slade Road, Devon Road, Bardwell Road and Pile Street, Bardwell Park



### Contact our team

Thank you for your patience while we complete this important work. Please contact us if you have more questions.

-  [nswroads.work/M6portal](https://nswroads.work/M6portal)
-  [nswroads.work/M6](https://nswroads.work/M6)
-  [M6Stage1@rms.nsw.gov.au](mailto:M6Stage1@rms.nsw.gov.au)
-  1800 789 297
-  Transport for NSW  
Locked Bag 928, North Sydney NSW 2059



If you need help understanding this information, please contact the Translating and Interpreting Service on 131 450 and ask them to call us on 1800 789 297.

**Privacy** Transport for NSW are collecting your personal information in connection with the M6 Stage 1 ("the Project"). In addition to collecting your name and contact details we may collect other information such as your submissions and other communications with us. We will retain and use this information for consultation purposes, including communications and analysis in connection with the Project. We will not disclose your personal information to third parties unless authorised by law and if we include your submissions in any public report we will not identify you. Providing your personal information is voluntary but if you do not provide it we may not include you on our stakeholder database and you might miss further consultation opportunities. Your personal information will be held by us and you can contact us to access or correct it. Please write to us at [M6Stage1@rms.nsw.gov.au](mailto:M6Stage1@rms.nsw.gov.au) or call on 1800 789 297.