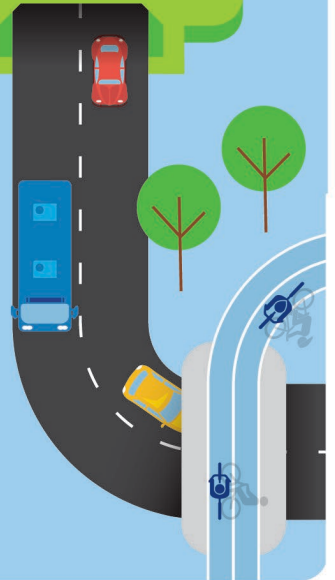




# M6 Stage 1

Site investigations at Ador Park Precinct,  
Rockdale from Monday 27 April 2020

April 2020



**We will be carrying out site investigations to provide important information to help us design and build your new and upgraded community facilities as part of the M6 Stage 1 project.**

Our work area is shown on the map on this page.

Currently infrastructure construction projects are considered essential to the economy and will continue as planned across the city and the state.

The safety and wellbeing of our workforce and the wider community is our highest priority. Our people are following hygiene and appropriate social distancing measures and will continue to do so.

## Our work schedule

We expect our work will take up to one week to complete, weather permitting. Our work hours will be:

**7am to 6pm, Monday to Friday**

## How will our work affect you?

Our work will be carried out in one area at a time to minimise impact. We will also help to reduce noise by using low-noise reversing alarms on all machinery and turning off equipment and vehicles when they are not being used.

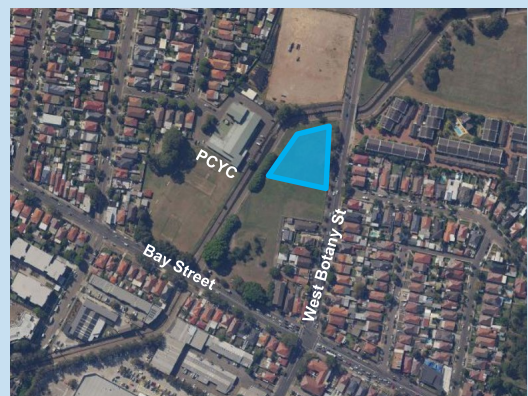
There will be no changes to traffic or pedestrian access to footpaths during this work.

## What does our work involve?

Our work will involve an assessment of the site and taking samples of soil. We will be using a truck, light vehicles, scanning equipment and hand tools during our work.

Once work is complete, we will reinstate the area by replacing soil and relaying grass. This may lead to raised ground levels in some areas for a short period of time so please be careful.

## Location of work



● Location of work

This important project has now been approved and we expect to start construction on the community facilities from mid-2020. Please visit [nswroads.work/M6portal](https://nswroads.work/M6portal) for more information.

## Contact our team

Thank you for your patience while we complete this important work. Please contact us if you have more questions.



[nswroads.work/M6portal](https://nswroads.work/M6portal)



[nswroads.work/M6](https://nswroads.work/M6)



[M6Stage1@rms.nsw.gov.au](mailto:M6Stage1@rms.nsw.gov.au)



1800 789 297



Transport for NSW  
Locked Bag 928, North Sydney NSW 2059



If you need help understanding this information, please contact the Translating and Interpreting Service on 131 450 and ask them to call us on 1800 789 297.

**Privacy** Transport for NSW are collecting your personal information in connection with the M6 Stage 1 ("the Project"). In addition to collecting your name and contact details we may collect other information such as your submissions and other communications with us. We will retain and use this information for consultation purposes, including communications and analysis in connection with the Project. We will not disclose your personal information to third parties unless authorised by law and if we include your submissions in any public report we will not identify you. Providing your personal information is voluntary but if you do not provide it we may not include you on our stakeholder database and you might miss further consultation opportunities. Your personal information will be held by us and you can contact us to access or correct it. Please write to us at [M6Stage1@rms.nsw.gov.au](mailto:M6Stage1@rms.nsw.gov.au) or call on 1800 789 297.