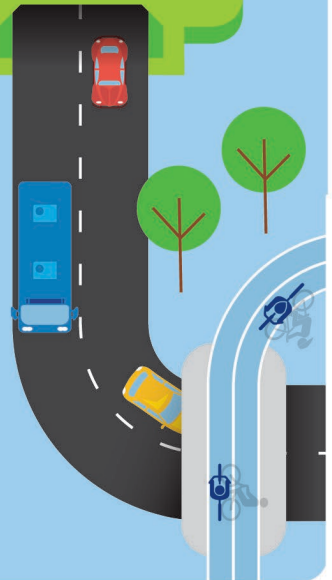




F6 Extension Stage 1

Site investigations at Cameron Street, Rockdale from Wednesday 25 September



The F6 Extension Stage 1 will remove over 2,000 trucks a day from surface roads; returning local streets to local communities.

To help us with our plans, we need to carry out some geotechnical investigations on Cameron Street, Rockdale from Wednesday 25 September.

We'll be drilling boreholes in the ground to gather information about the environmental and ground conditions to help us design and build the F6 Extension Stage 1 project.

Our work area is shown on the map over the page.

Our work schedule

Work hours are between:

Monday to Friday, 7am and 6pm

We expect the work to take around one week to complete, weather permitting.

How will our work affect you?

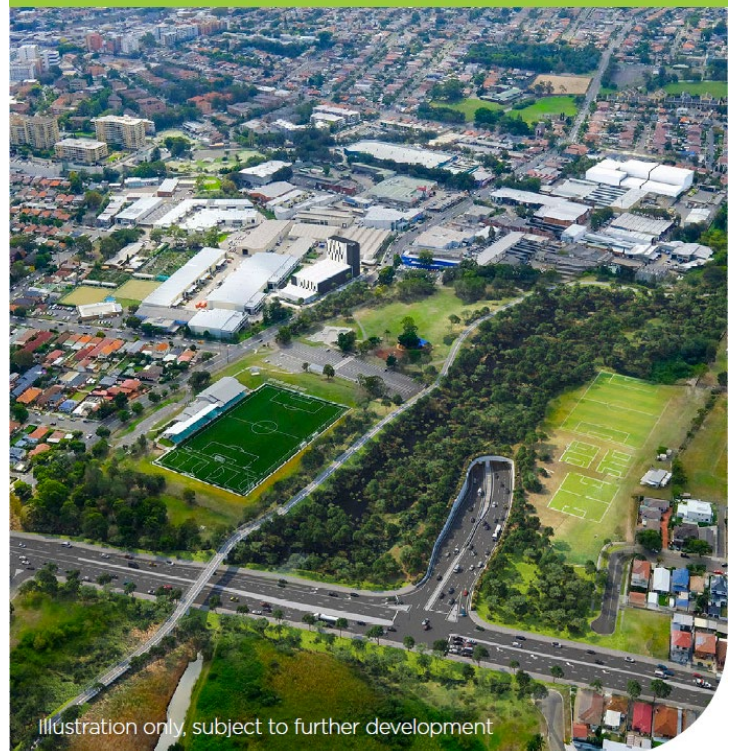
We will help to reduce noise by using low noise reversing alarms on all machinery and turning off equipment and vehicles when they are not being used.

Traffic changes and pedestrian access

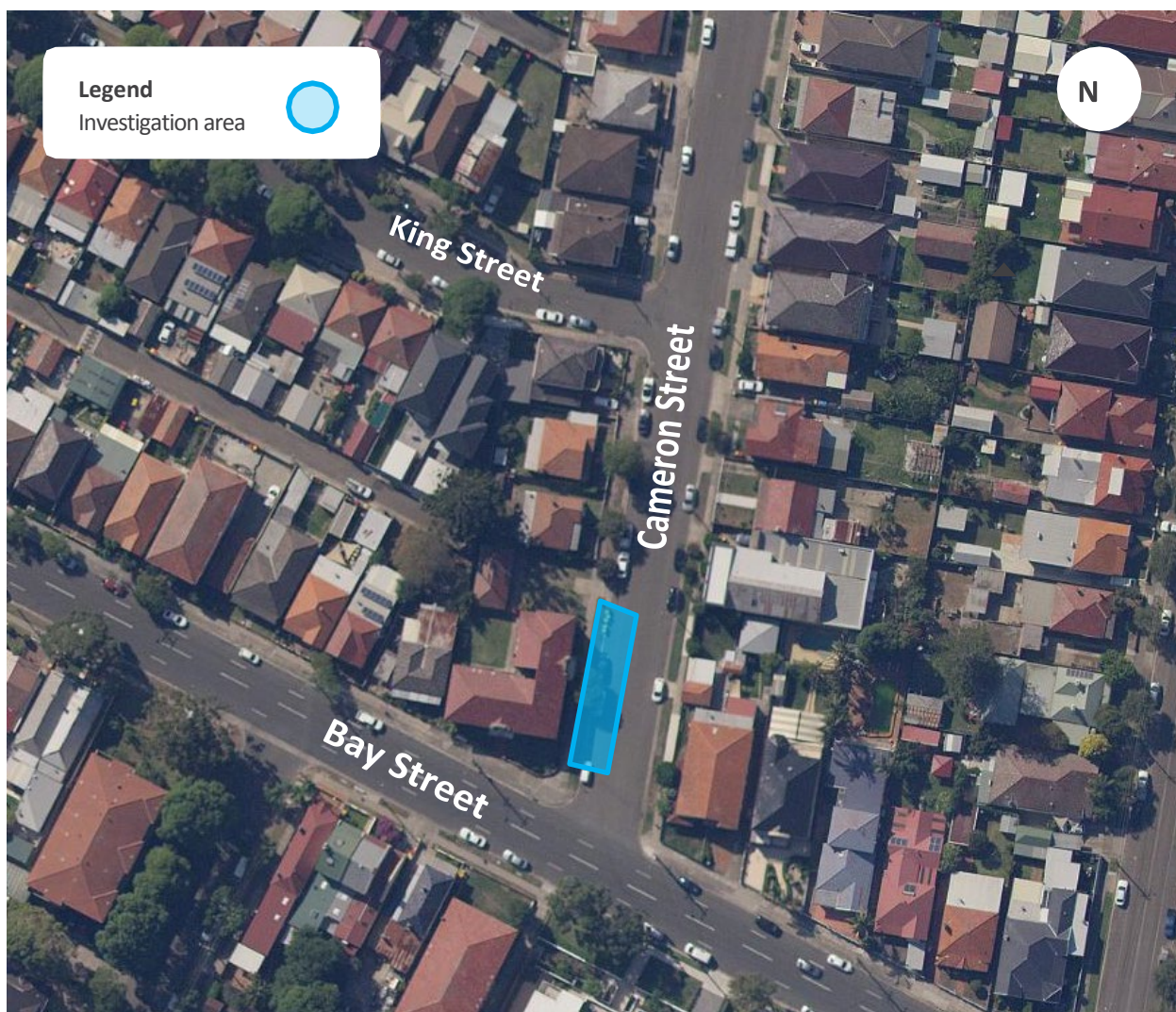
Our work will impact up to three car parking spaces. This is because we need to install temporary fencing around the work site and store our equipment overnight.

There will be no changes to traffic or pedestrian access during this work. We ask that pedestrians take care when navigating around our work area.

Entry and exit ramps of the F6 Extension Stage 1 tunnels at President Avenue, Kogarah.



Location of work at Rockdale



For the latest traffic updates

Call **132 701** Visit **livetraffic.com** Download the App **Live Traffic NSW**



Contact our team

Thank you for your patience while we complete this important work. Please contact us if you have more questions.



rms.nsw.gov.au/F6Extensionportal



rms.nsw.gov.au/F6



F6Extension@rms.nsw.gov.au



1800 789 297



Roads and Maritime Services
Locked Bag 928, North Sydney NSW 2059



If you need help understanding this information, please contact the Translating and Interpreting Service on 131 450 and ask them to call us on 1800 789 297.

Privacy Roads and Maritime Services ("RMS") is subject to the Privacy and Personal Information Protection Act 1998 ("PPIP Act") which requires that we comply with the Information Privacy Principles set out in the PPIP Act. All information in correspondence is collected for the sole purpose of assisting the assessment of this proposal. The information received, including names and addresses of respondents, may be published in subsequent documents unless a clear indication is given in the correspondence that all or part of that information is not to be published. Otherwise RMS will only disclose your personal information, without your consent, if authorised by the law. Your personal information will be held by RMS. You have the right to access and correct the information if you believe that it is incorrect.